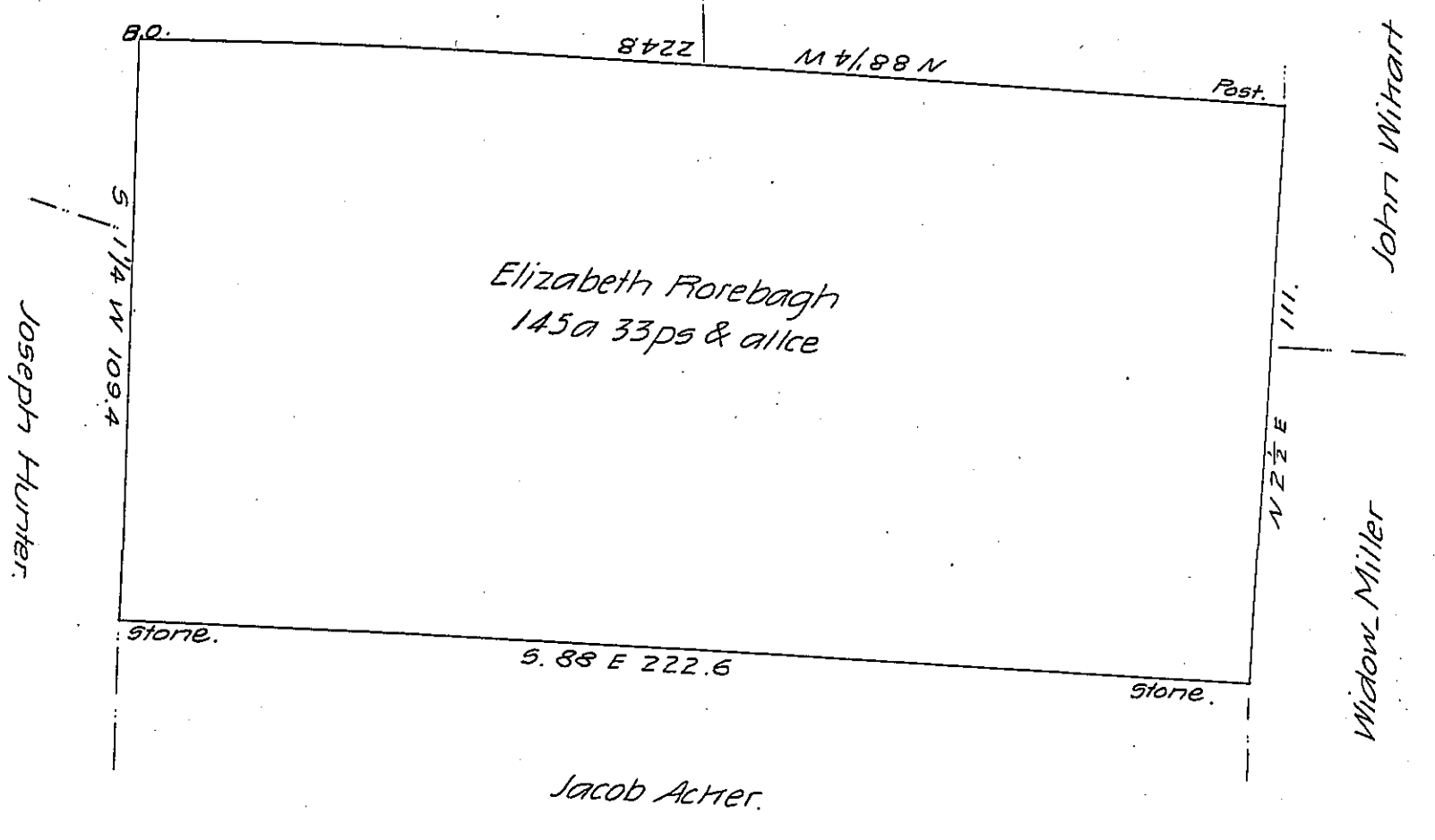


John Arends.

Thomas Lorimer



Situate in Mountjoy Township Adams County being part of
 a larger tract containing 288a 147ps & alicc. Surveyed October 18th
 1810 by warrant to Elizabeth Forebagh dated October 28th 1746.
 Divided from the residue same day for 200a Mathias Orndorf con-
 taining one hundred and forty five acres thirty three perches & alicc.

By Saml Sloan D.S.

To Andrew Porter Esqr.

Surveyor General.

IN TESTIMONY that the above is a copy of the original remaining on file in
 the Department of Internal Affairs of Pennsylvania, made
 conformably to an Act of Assembly approved the 16th day of
 February, 1833, I have hereunto set my Hand and caused
 the Seal of said Department to be affixed at Harrisburg,
 this second day of October 1906

Laac D Brown
 Secretary of Internal Affairs.